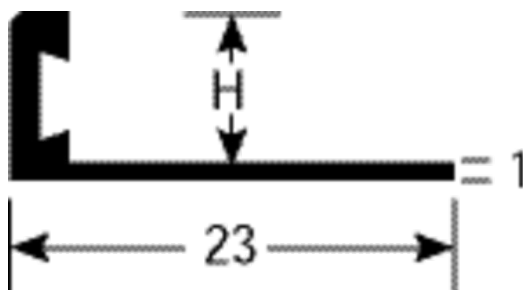
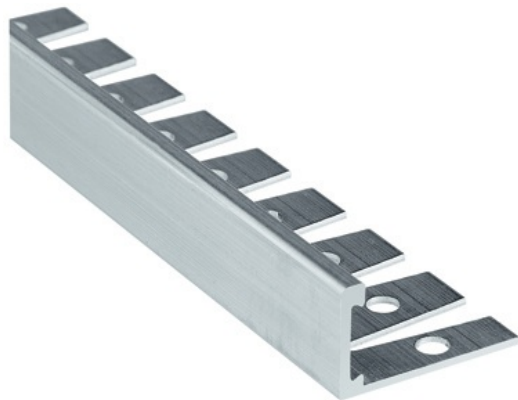


DATA SHEET



DESCRIPTION

Aluminium profile
to make a transition between 2 floor coverings of different levels
For edging and finishing a floor covering
To be screwed - central holes
to be sealed

USE

For edging and finishing a floor covering
Indoor use

REFERENCE

Ref : 13520

MATERIAL

REACH compliant

FITTING MODE

Sealed or screwed: if screwed, locate the holes and drill the subfloor. Place the ROMUS plugs 94154. Position the profile and fasten with screws 94137.

> MAINTENANCE

For daily cleaning, use standard detergents. In case you want to use a sodium, ammoniac or acid based cleaner, carry first out a preliminary test.

The information contained in this document is provided for information purposes. Romus cannot be held liable for this information. The user or specifier will check the compatibility of the product technical data with the actual situation. Romus reserves the right to modify all or part of this document without prior notice.

Architect :

Project :

Email :

Tel :

Distributor :

Tel :

Email :