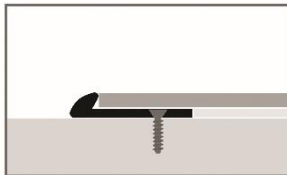


Technical Data Sheet

USE 1



Description

Aluminium profile.
For a decorative effect for LVT

Purpose

USE 1:
=> For edging and finishing a floor covering
USE 2:
=> Combined with the LVT plinth stop, it provides a proper finish to the cut of the LVT or flexible flooring. Can also be used to finish the upper layer of a ROMUCHOC wall protection plate.

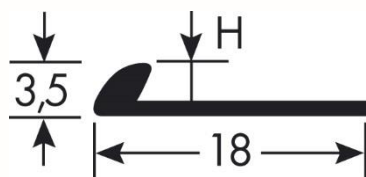
INDOOR USE

Reference

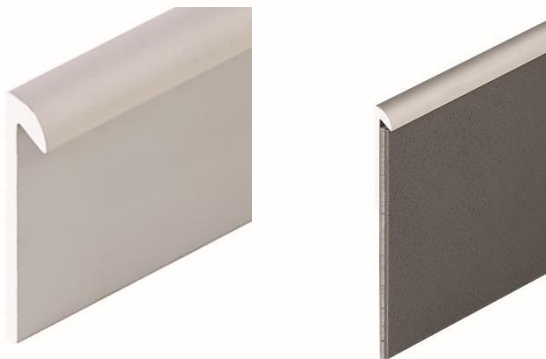
Ref 3541- Alu silver
Ref 3544 – Alu titanium
Length: 2,50m

Material

6060-T5-N755-2 type top-of-the-range alloy, thermally treated for higher hardness. Anodised (no clamping marks) in greatest thickness (15 microns). Colours are those defined by « RAL » European standard. REACH compliant



USE 2



How to install

Sealed or screwed: if screwed, locate the holes and drill the subfloor. Place the ROMUS plugs 94154. Position the profile and fasten with screws.

Maintenance

For daily cleaning, use standard detergent. In case you want to use a sodium, ammoniac or acid based cleaner, carry first out a preliminary test.

Information contained in this document is indicative only. ROMUS accepts no liability in connection therewith. The user or the specifier must check the compatibility of the product's technical data with the actual situation. ROMUS reserves the right to change all or part of this document without prior notice.

Architect/Investor:

Project:

Email:

Tel:

Distributor:

Tel:

Email: