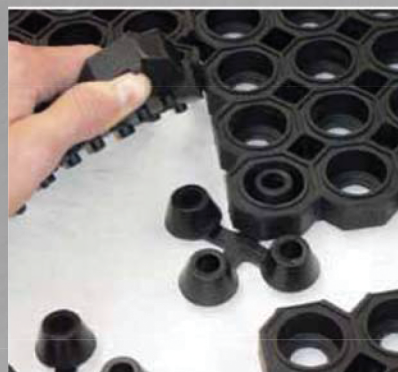
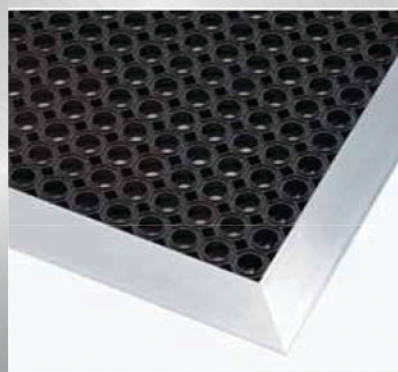
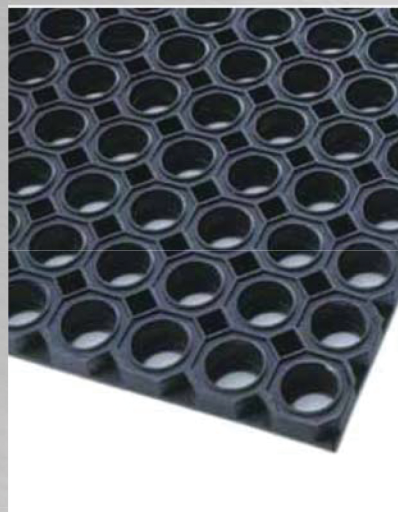


TECHNICAL DATASHEET - GB



- This durable rubber product is designed to function at the immediate entrance, primarily as a scraper mat to stop dirt, grit and grime outside the doorway.
- Its superior rubber compounds is made to withstand weather extremes and the heaviest of foot traffic
- Raised knobs underneath allow excellent drainage, leaving a clean and dry surface.
- Outdoor entrances - Heavy foot traffic areas
- Custom sizes available.
- Hose off with water and hang to dry.
- The heavy weight of this mat assures it is non-shifting.

PRODUCT SPECIFICATIONS		
Designation	Dust Control Matting	
Type	Non-absorbent/ scrape rubber mat	
Description	Octogonal ring design with open construction	
Material	Natural rubber compound	
Process	Compression moulding	
Category	Outdoor Non absorbent - Rubber classics	
Recommended use	Outdoor - heavy foot traffic	
Colours	Black	
Weight	12,7 kg/m²	
Thickness	23 mm	
Standard sizes	100 cm x 150 cm	
Custom sizes	Per m²	
Special remarks	Suitable for use under extreme weather conditions	
PRODUCT TESTING		
Tests	Norms	Results
Abrasion resistance	ASTM D3884	
Colour fastness to light	AATCC 16E	
Accelerated wear test by sim floor machine	U.S.	
Accelerated soiling	U.S.	
Anti-slip	DIN51130 BGR181	
Water retention	U.S	
Hardness	U.S	60 Shore A
Sanitary epidemiologic test	GN 2.1.6.1338-03 MCL GN 2.1.6.2309-07 OBUV	Pass - Certificate no. 77.01.16.251.P.044985.07.09
FIRE TESTING		
	Surface Flammability	ASTM D2859
Sustainability	<ul style="list-style-type: none">Recyclable materialREACH compliant (Registration, Evaluation, Authorization and restrictions of Chemicals)Contributes to cleaner environment by reducing need of cleaning chemicals	