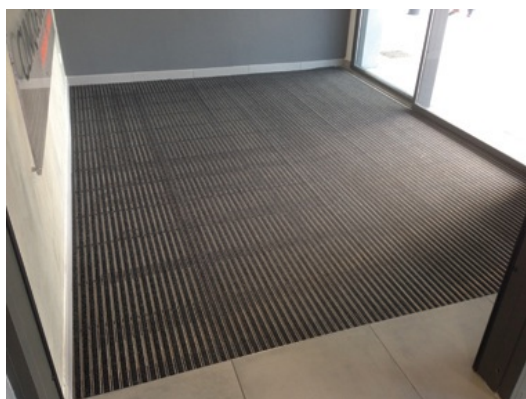


DATA SHEET



DESCRIPTION

ENTRY CLEAN ENTRANCE MATS

ROMUS ENTRY CLEAN combined entrance mats are designed to prevent as efficiently as possible the penetration of dust, moisture and other residues carried into buildings by visitors' soles, and to avoid any dirtying and premature wear of flooring.

PURPOSE OF ENTRY CLEAN ENTRANCE MATS:

USE

Heavy traffic

Thickness = 12 mm

Zone 2: INDOOR use

Roll-up open structure

REFERENCE

Ref : 8450

Made to measure: download the specific ROMUS Order Form

http://www.romus.org/tmp/order_form/uk.pdf

MATERIAL

Mill aluminium profiles, standard 6060-T5, N755-2. Heavy traffic polypropylene carpet insert.

REACH compliant

FITTING MODE

INSTALLATION: To be laid in a sealed ROMUS matwell frame 6100 with ROMUS corner angles 161104 and feet 161103, or laid directly on the floor with ROMUS bevelled access profile 6115 and ROMUS corner angles 16117 for level adjustment. Made-to-measure frames available upon request.

The information contained in this document is provided for information purposes. Romus cannot be held liable for this information. The user or specifier will check the compatibility of the product technical data with the actual situation. Romus reserves the right to modify all or part of this document without prior notice.

Architect :

Project :

Email :

Tel :

Distributor :

Tel :

Email :