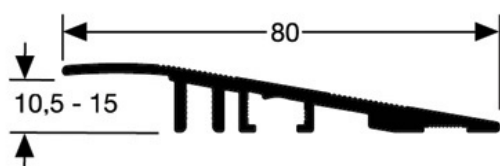
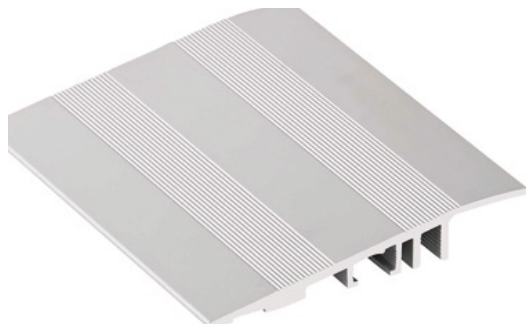


DATA SHEET



DESCRIPTION

Drilled aluminium profile
to make a transition between 2 floor coverings of different levels
For easy access with pallet trucks, trolleys and wheelchairs.
Extremely sturdy.
Drilled - countersunk: to be screwed
14 holes, first and last one at 83 mm
Holes are drilled, countersunk and deburred

USE

To be installed in junction with a floor covering
Indoor use

REFERENCE

Ref : 2621

MATERIAL

REACH compliant

FITTING MODE

Cut the profile to the desired length. Locate the holes and drill in the subfloor. Place the ROMUS plugs 94154. Position the profile and fasten with screws VVVV.

> MAINTENANCE

Use standard cleaners (neutral detergents)

The information contained in this document is provided for information purposes. Romus cannot be held liable for this information. The user or specifier will check the compatibility of the product technical data with the actual situation. Romus reserves the right to modify all or part of this document without prior notice.

Architect :

Project :

Email :

Tel :

Distributor :

Tel :

Email :