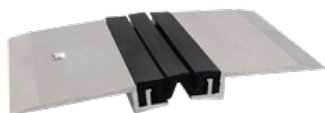


DATA SHEET



DESCRIPTION

Aluminium profile with soft connecting insert
To cover and close expansion joints in industrial buildings, hospitals, universities, shopping centres
Drilled - countersunk: to be screwed
18 holes, first and last one at 83 mm
Holes are drilled, countersunk and deburred
For available inserts, see ROMUS catalogue

USE

To be installed on a floor covering or on a protected floor (resin, painted floor...).
Indoor use

REFERENCE

Ref : 1870

MATERIAL

Aluminium profile: 6060-T5, N755-2 standard top-of-the-range alloy, thermically treated for higher hardness. xxxx colour soft PVC smooth expansion insert
REACH compliant

FITTING MODE

Stagger the profiles. Cut the profile to the desired length. Locate the holes and drill into the concrete. Place the ROMUS plugs 194153. Place the profile and fasten with the ROMUS screws 94137. Insert the PVC joint using a ROMUS mallet 94959. The joint can be welded to the PVC floor covering: use the ROMUS welding kit 95088.

> MAINTENANCE

For daily cleaning, use standard detergents. In case you want to use a sodium, ammoniac or acid based cleaner, carry first out a preliminary test on the profile, avoiding the insert.

The information contained in this document is provided for information purposes. Romus cannot be held liable for this information. The user or specifier will check the compatibility of the product technical data with the actual situation. Romus reserves the right to modify all or part of this document without prior notice.

Architect :

Project :

Email :

Tel :

Distributor :

Tel :

Email :