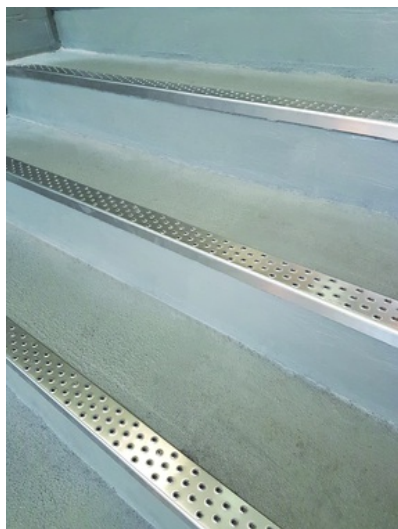
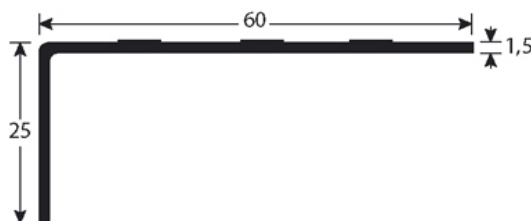


## DATA SHEET



### DESCRIPTION

Drilled stainless steel stair-nosing  
To secure stairs and reduce slip risk  
Drilled - countersunk: to be screwed

### USE

For overlapping a floor covering or a parquet or concrete floor.  
Outdoor use

### REFERENCE

Ref : 1772

### MATERIAL

REACH compliant

### FITTING MODE

Cut the profile to the desired length. Locate the holes and drill in the subfloor. Place the ROMUS plugs 94154. Position the profile and fasten with screws VVVV.

### > MAINTENANCE

For daily cleaning, use standard detergents. In case you want to use a sodium, ammoniac or acid based cleaner, carry first out a preliminary test.

The information contained in this document is provided for information purposes. Romus cannot be held liable for this information. The user or specifier will check the compatibility of the product technical data with the actual situation. Romus reserves the right to modify all or part of this document without prior notice.

Architect :

Project :

Email :

Tel :

Distributor :

Tel :

Email :