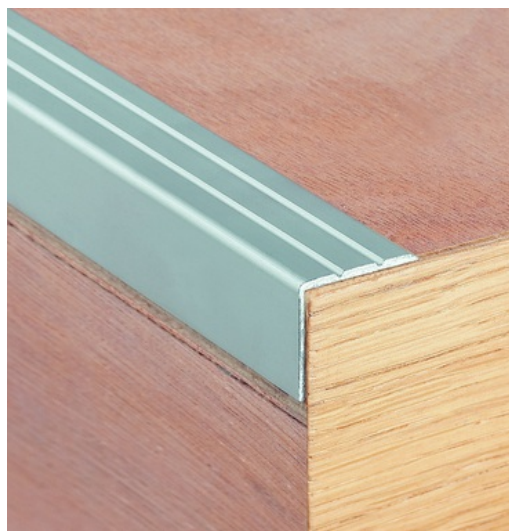
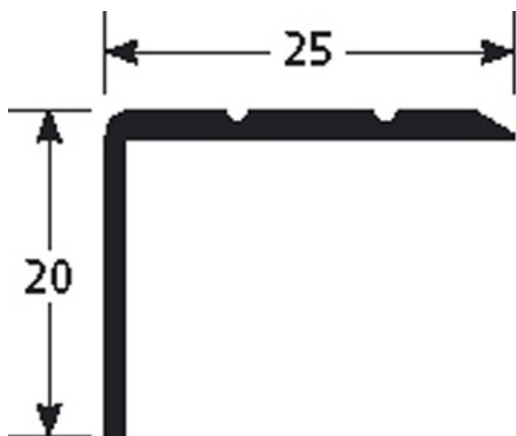
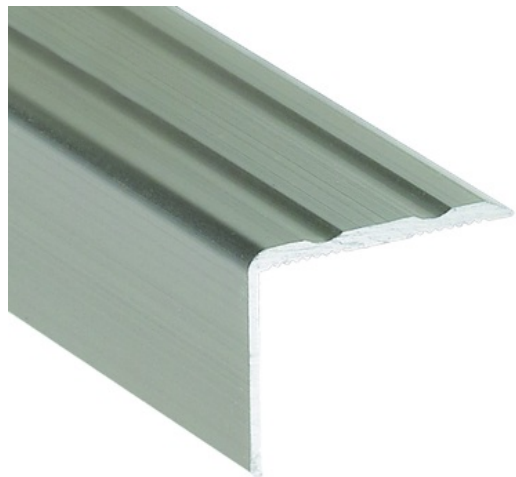


DATA SHEET



DESCRIPTION

Drilled aluminium stair-nosing
To secure stairs and reduce slip risk
Drilled - countersunk: to be screwed
14 holes, first and last one at 83 mm
Holes are drilled, countersunk and deburred
Supplied with screws and plugs

USE

For overlapping a floor covering or a parquet or concrete floor.
Indoor use

REFERENCE

Ref : 1516

MATERIAL

REACH compliant

FITTING MODE

Cut the profile to the desired length. Locate the holes and drill into the concrete. Place the ROMUS plugs 194143. Position the profile and fasten with the screws of the same colour supplied with the profile.

The information contained in this document is provided for information purposes. Romus cannot be held liable for this information. The user or specifier will check the compatibility of the product technical data with the actual situation. Romus reserves the right to modify all or part of this document without prior notice.

Architect :

Project :

Email :

Tel :

Distributor :

Tel :

Email :

DATA SHEET

> MAINTENANCE

For daily cleaning, use standard detergents. In case you want to use a sodium, ammoniac or acid based cleaner, carry first out a preliminary test.

The information contained in this document is provided for information purposes. Romus cannot be held liable for this information. The user or specifier will check the compatibility of the product technical data with the actual situation. Romus reserves the right to modify all or part of this document without prior notice.

Architect :

Project :

Email :

Tel :

Distributor :

Tel :

Email :