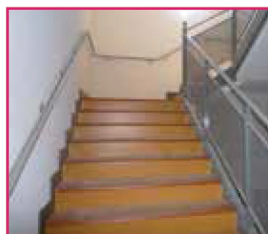


Application guidelines



● TACTILE STUDS

At the top of the staircase, a warning floor covering should be installed at a distance of 50cm from the first step, creating a visual and tactile contrast for the visually impaired.



● HANDRAILS

All stairways that are 1.20 m wide or more should have handrails on both sides. To be installed at a height of between 80 cm and 1 m.



● STAIR-NOSINGS

They should:

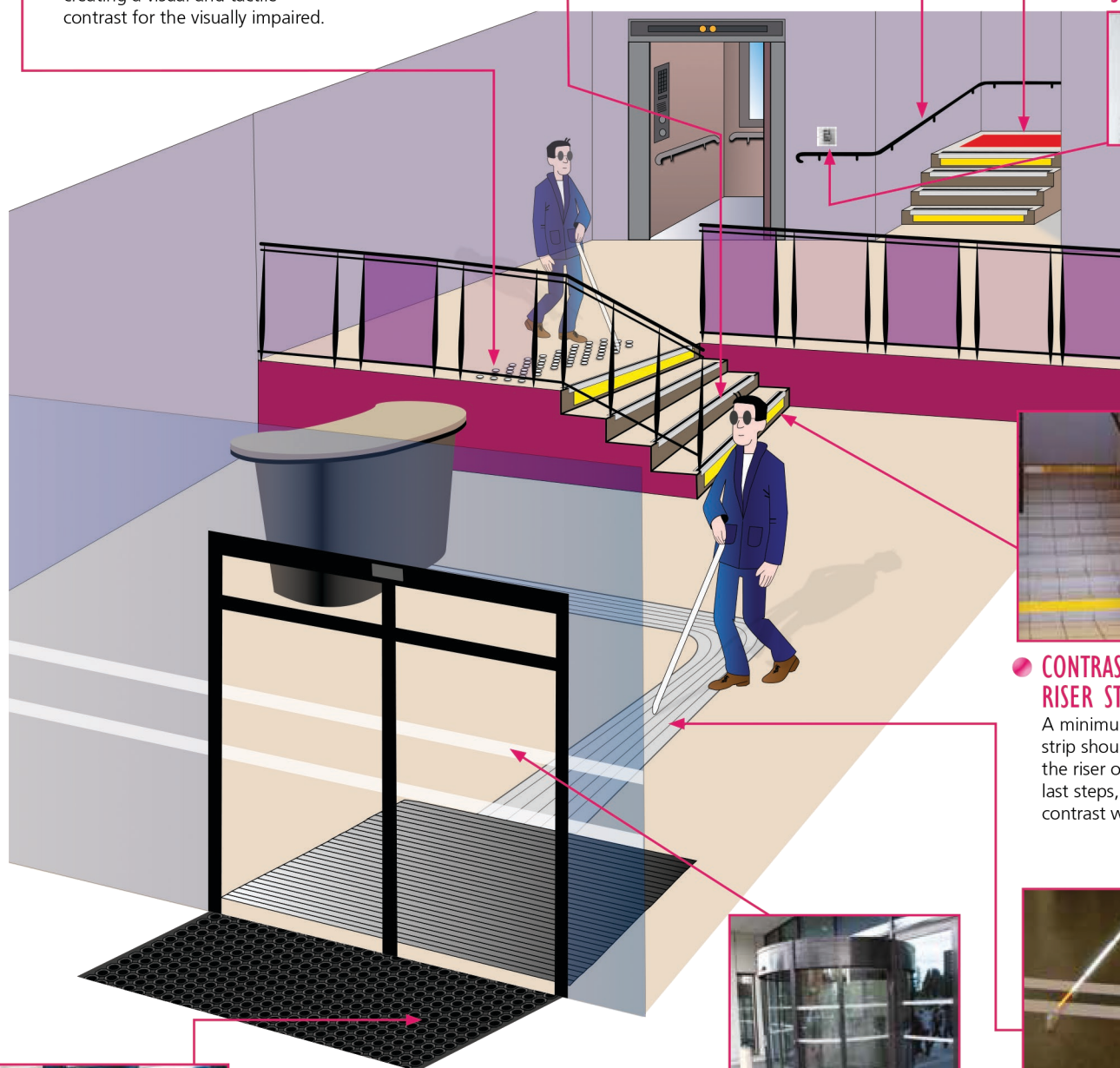
- Contrasting colours
- Anti-slip
- Have no overhang



● TACTILE TILES

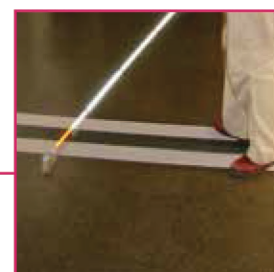
At the top of each flight of stairs (of at least 3 stairs), there should be a warning floor covering or device 50 cm from the first step, creating a visual and tactile contrast for the visually impaired.

● BRAILLE SIGNS



● CONTRAST RISER STRIPS

A minimum 10 cm high strip should be glued on the riser of the first and last steps, creating a visual contrast with the stairs.



● GUIDING STRIPS

To facilitate navigation, the pathway must offer a visual and tactile contrast (70% difference between the bottom and the pathway) Different type according to the type of Public Access Building.



● ENTRANCE MATTING

Orders of 1st August 2006 modified, articles 9 (ERP) and 8 (BHC) Laid or sealed mats:

- Must be sufficiently hard so as not to obstruct wheelchair traffic.
- Must not create a level distance of more than 2cm.
- the floor must be firm, anti-slip, non reflective and cause no obstruction to wheels.



● WINDOW WARNING TAPE

It is recommended to apply two horizontal 5cm wide strips indoors, 1.10m and 1.60m high respectively.